

# 10 Creative Ways to Use State Funding for Family Engagement



**JESSE TIJERINA**  
Director of State & Federal Programs,  
Thompson School District R2-J



**CARRIE ZIMMERMAN**  
Superintendent, Center  
Consolidated School District 26JT



**DARCY HUTCHINS**  
Director of Family Partnerships,  
Colo. Department of Education



**SHERRI WILSON**  
Sr. Director of Training &  
Engagement, NAFSCE



**KATE GARVIN**  
Sr. Director, Statewide Family Engagement  
Center, Keystone Policy Center



**MIKE ANDREWS**  
Co-Founder,  
Coaction Collective

*Thanks for joining!*

# Rules of Engagement

- Feel free to place questions and comments in the chat.
- We will have a Q&A section after the panel portion



# Host



**MIKE ANDREWS**

Co-Founder,  
Coaction Collective



# Panelists



**JESSE TIJERINA**

Director of State & Federal Programs,  
Thompson School District R2-J



**CARRIE ZIMMERMAN**

Superintendent, Center  
Consolidated School District 26JT



# Panelists



**S H E R R I   W I L S O N**

**Sr. Director of Training &  
Engagement, NAFSCE**



**NAFSCE**  
NATIONAL ASSOCIATION  
FOR FAMILY, SCHOOL, AND  
COMMUNITY ENGAGEMENT

# Panelists



**K A T E G A R V I N**

**Sr. Director, Statewide Family Engagement  
Center, Keystone Policy Center**



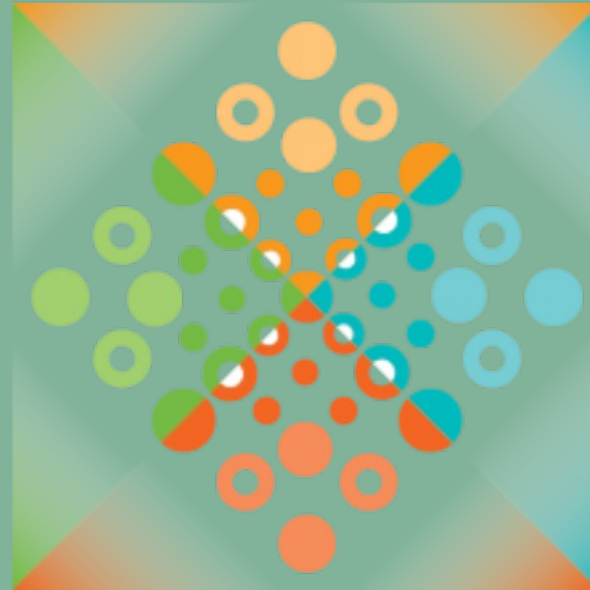
**Rocky Mountain Family  
Engagement Collective**

# Panelists



**D A R C Y   H U T C H I N S**

**Director of Family Partnerships,  
Colo. Department of Education**



**FAMILY  
SCHOOL AND  
COMMUNITY  
PARTNERSHIPS**



# Colorado Framework for Districts and Schools

## Definition

Families, early childhood programs, schools, and communities **actively partnering** to develop, implement, and evaluate effective and **equitable practices** to improve educational **outcomes for children and youth.**



## Create an Inclusive Culture

### Create an Inclusive Culture

An inclusive culture honors the lived experience of families in early childhood programs and/or the school community. Self-assess with the following:

- How are your practices inclusive of all families?
- How are you learning about families lived experiences?
- Who is leading and supporting the creation of the welcoming culture?

## Build Trusting Relationships

Trusting relationships enable families and programs/schools to partner about the education outcomes for children and youth. Self-assess with the following:

- What do trusting relationships look like in your program/district/school?
- How are you ensuring effective use of two-way communication with your families to sustain positive relationships?
- How do you leverage relationships with families to achieve your program/district/school goals?



## Build Trusting Relationships



## Design Capacity-Building Opportunities

### Design Capacity Building Opportunities

Capacity building opportunities for staff and families promote shared leadership about educational outcomes for children and youth. Self-assess with the following:

- How do you use the context expertise of families to better your content expertise?
- How are you utilizing the assets of your families in your programs/schools?
- How are you using FSCP as a school improvement strategy?

## Dedicate Necessary Resources

Necessary resources integrate and elevate partnering practices to scale. Self-assess with the following:

- How do you implement evidence-based practices to cultivate and sustain FSCP?
- Where are you now and where will you go?
- How will you continually improve your family partnerships through community-based resources?



## Dedicate Necessary Resources



**Stop Screen Share for Panelists**

# Panelists



**S H E R R I   W I L S O N**

**Sr. Director of Training &  
Engagement, NAFSCE**



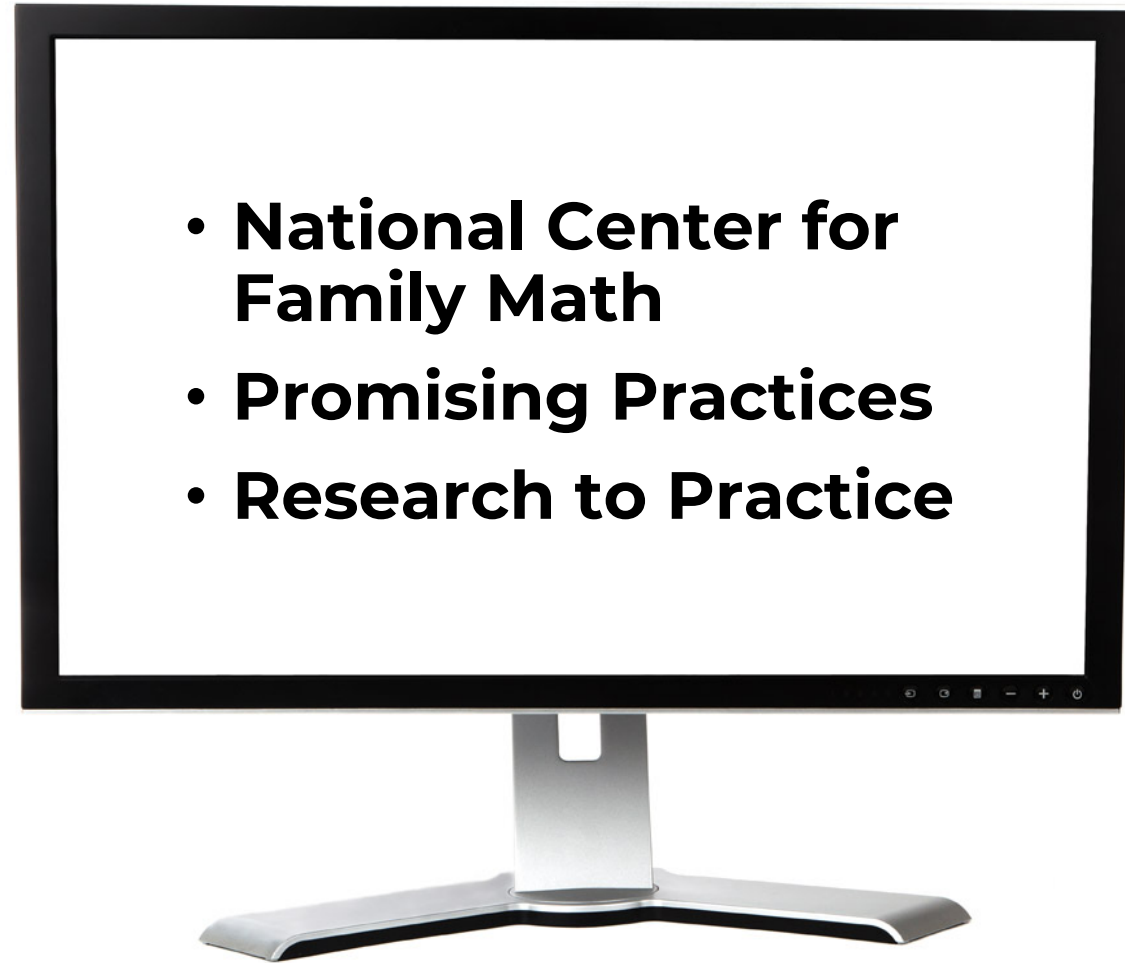
**NAFSCE**  
NATIONAL ASSOCIATION  
FOR FAMILY, SCHOOL, AND  
COMMUNITY ENGAGEMENT



# National Association for Family School and Community Engagement

Sherri Wilson, Senior Director of Training  
and Engagement

# Webinars

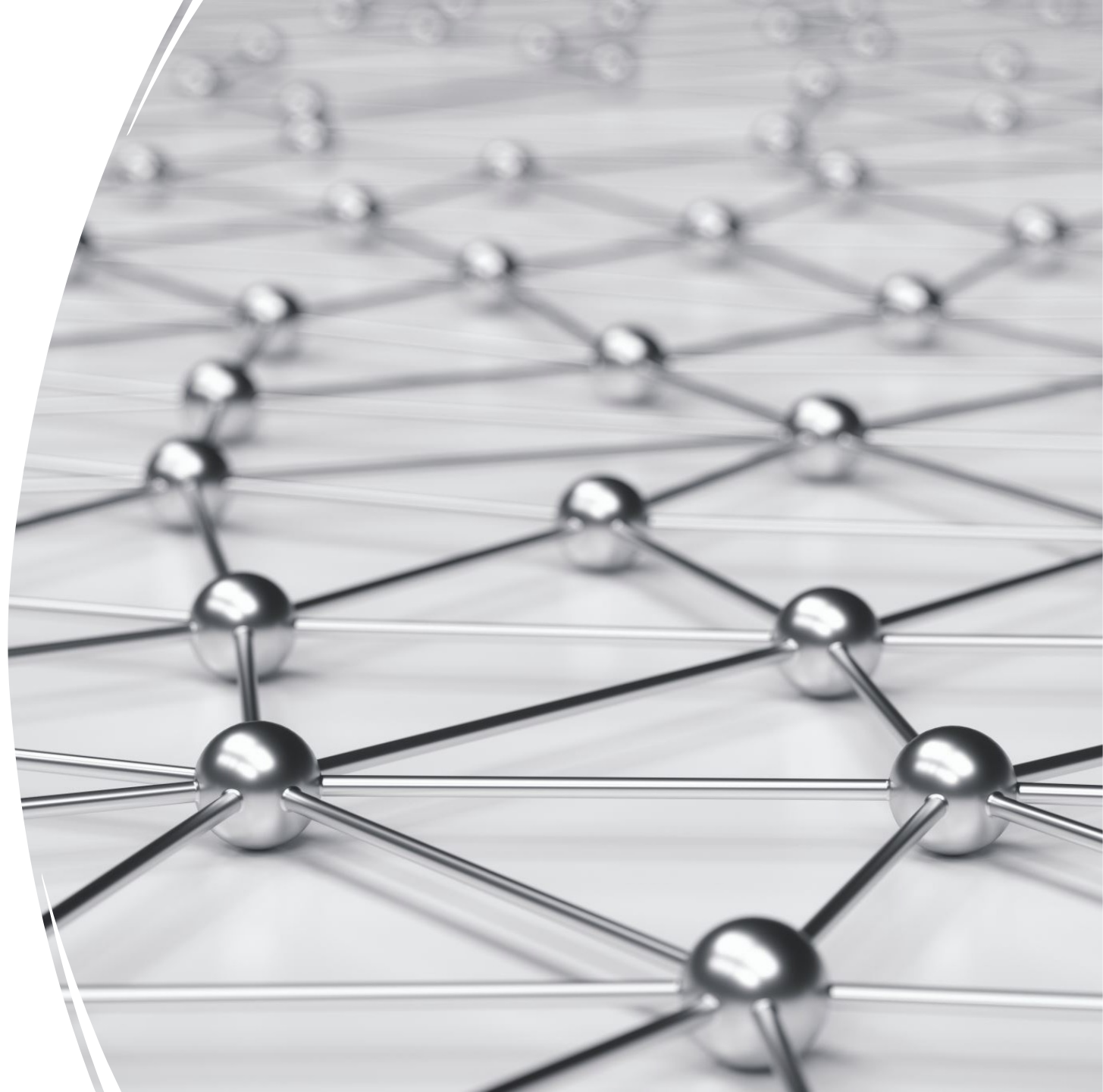




# NAFSCE Memberships

## **Join the movement!**

- Professional learning opportunities
- Member Connect platform
- Resource Library
- Member Directory
- Career Center



Brought to you by:



# NATIONAL ASSEMBLY

FOR FAMILY ENGAGEMENT  
IN EDUCATION

---



Denver 2024

**Virtual**      October 21-22

**In-person**      October 23-25

# Registration Open Now



# Contact Information

**Sherri Wilson**

Senior Director of Training and  
Engagement

[WilsonS@NAFSCE.org](mailto:WilsonS@NAFSCE.org)





# Panelists



**K A T E   G A R V I N**

**Sr. Director, Statewide Family Engagement  
Center, Keystone Policy Center**



**Rocky Mountain Family  
Engagement Collective**



# RMFEC: About Us

- We are a collective of national and local family engagement experts coming together to promote best practices across Colorado.
- We gather and organize family, school, district, and state leaders in Colorado around **4 key levers**:
  - FSCP Resources
  - Training
  - Coaching
  - Collaborative Networks



*in partnership with*



# SFEC Project Goals



Develop clear expectations and guidance to implement evidence-based FSCP practices and structures at the **state, district, and building level**



Increase implementation of FSCP practices and structures at each of these levels by cultivating the mindsets and skills of **leadership and staff**



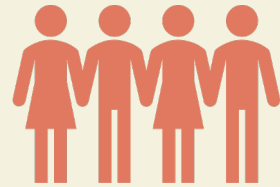
Equip **families** with the self-belief, knowledge, and skills to fully realize their potential as academic partners and active collaborators in decision-making.



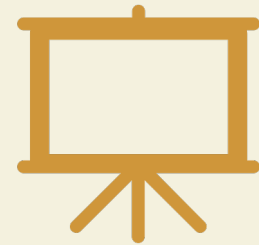
# Stay Involved



ECHO course for  
educators



District Cohorts



And future webinars!

---

# Q&A







**Contact**



**Mike Andrews**  
Coaction Collective  
mike@coactioncollective.com  
 jmuandrews



**Sherri Wilson**  
NAFSCE  
wilsons@nafsce.org  
 isherriwilson



**Jesse Tijerina**  
Thompson School  
District R2-J  
jesse.tijerina@tsd.org



**Carrie  
Zimmerman**

Center Consolidated  
School District 26JT  
czimmerman@center.k12.co.us



**Kate Garvin**  
Keystone Policy Center  
RMFEC  
kgarvin@keystone.org  
 katejgarvin



**Darcy Hutchins**  
Colo. Department  
of Education  
hutchins\_d@cde.state.co.us  
 darcy-hutchins-6a91a66

# Contact





**Thank you!**